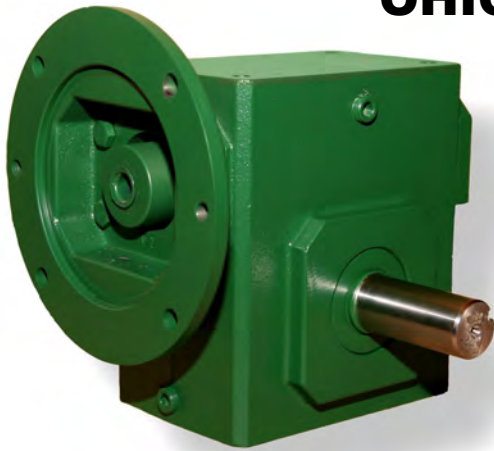


OHIO GEAR REDUCERS



DESIGN FEATURES

Cast Iron NEMA C Input Flange with machined fits for precision alignment for motor and bearings.

Seal Guard on quill-input styles protects input seals from damage during motor installation.

Oversized Positively Retained High Speed Input Shaft Bearing for higher shock load capacity, shaft alignment and seal life. Ideal for frequent starting and reversing applications.

High Capacity Oil Reservoir reduces noise, aids heat dissipation and lubricates for life. Multiple venting options for multi-position mounting. Factory filled with premium Mobil SHC634 synthetic Lubricant.

Single Output Cover design provides precise centering of gear for lower noise levels and higher overall gear efficiencies.

Push-Off Holes drilled and tapped into flange for quick motor removal on quill input styles (56 & 140TC frames).

Ohio Gear Fine-Graded, One Piece Cast housing for rigidity and alignment of worm, worm gear, bearings and mounting surfaces. Superior resistance to environmental contaminants with high heat dissipation and noise reduction. BISSC certified reducers available for food service applications.

Single-Piece, Alloy Steel Input Worm Shaft high lead angle worm is case hardened, ground and polished.

Robust Output Shaft of high strength steel alloy for superior torque and overhung load capacities.

Premium Grade 5 heat-treated bolts used throughout

O-Rings on Input and Output Covers eliminate gaskets, sealants and leaks.

Permanent “Full Fact” Metal Nameplate is drive screwed to housing for easy field identification even after years of service.

Tapered Roller Bearings on output shaft for high overhung and thrust capacities.

Bronze Alloy Worm Gear Is chill cast from premium quality bronze for maximum strength, lubricity and superior life.

Viton Premium Quality, Double Lip Seals throughout on micro finished surfaces mean extended life, resistance to high temperature, abrasion and chemicals.

OHIO GEAR

OHIO GEAR REDUCERS - HOW TO ORDER/STYLES

STYLE	SERIES		RATIO	MOTOR FLANGE		OUTPUT SHAFT	
	Series	Center Distance (inches)	Ratio :1	NEMA Input Flange Code	For NEMA Frame	L	Left hand output shaft
SOLID OUTPUT SHAFT BMQ —Motor Flange and Quill input BMC —Motor Flange and Flexible Coupling Input B —Non-Flanged Solid Input Shaft HOLLOW OUTPUT SHAFT SMMQ —Motor Flange and Quill Input SMMC —Motor Flange with Flexible Coupling Input SM —Non-Flanged, Solid Input Shaft	813	1.33	5	56	56C	R	Right hand output shaft
	815	1.54	7.5	140	143-5TC	D	Double output shaft
	818	1.75	10	180	182-4TC	#	Output Bore (Inches) for hollow o/p shaft
	821	2.06	15	210	213-5TC		
	824	2.38	20	250	254-6TC		
	826	2.63	25				
	830	3.00	30				
	832	3.25	40				
	842	4.25	50				
	852	5.25	60				
860	6.00	80					
			100				

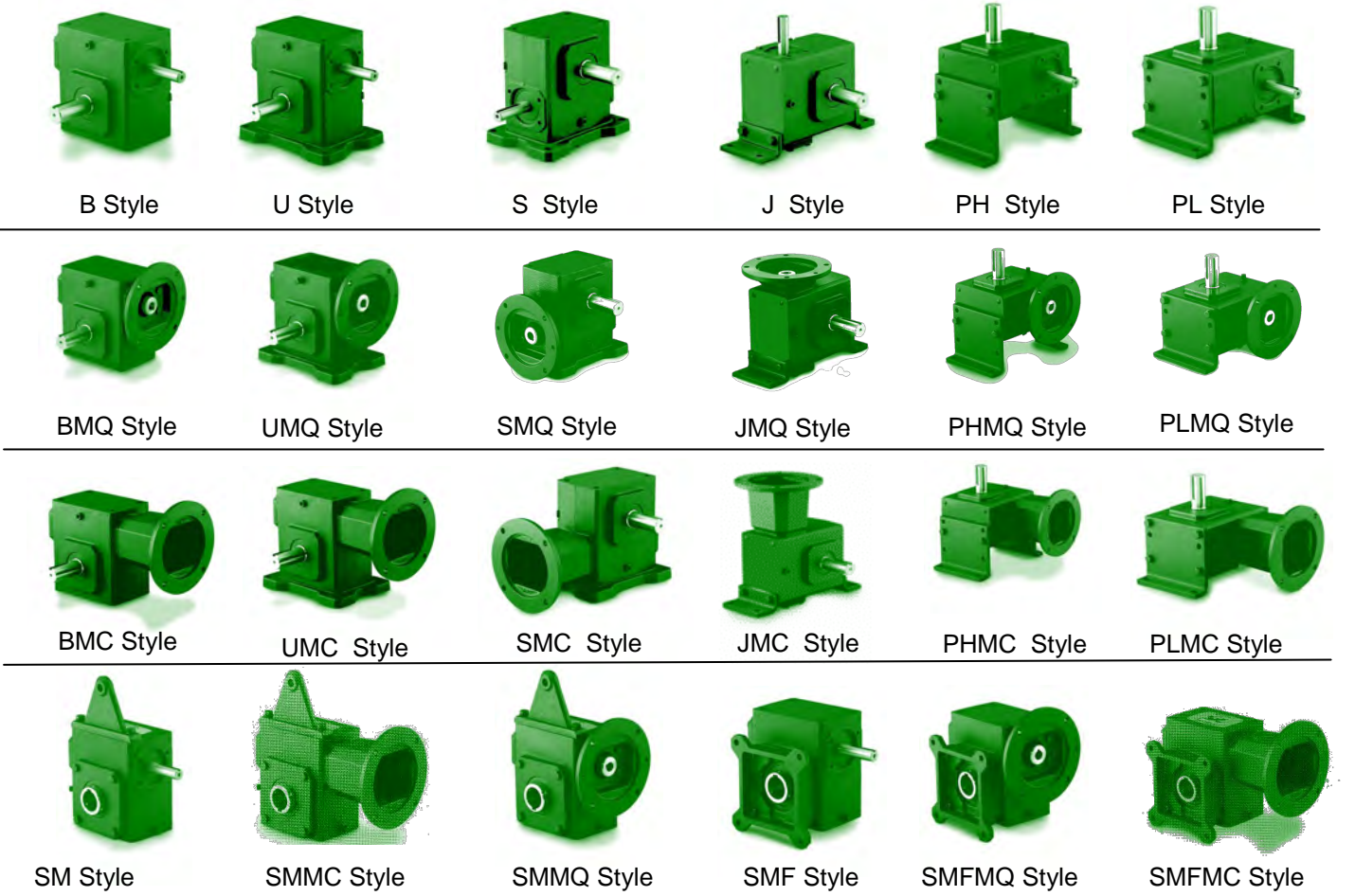
SAMPLE MODEL NUMBER
“BMQ818-1556C-L”

Motor Flange and Quill Input, Single Reduction, 1.75' Centre Distance, 15:1 Ratio, Left Hand Solid Output Shaft, 5/8" Input Bore With NEMA 56C Flange

BMQ **818** **15** **56C** **L**
 Style Series Ratio Motor Input Output Shaft

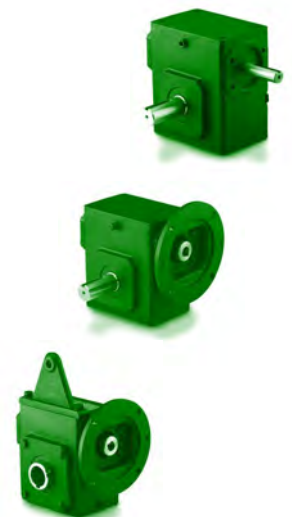
For base mounted unit replace letter B with corresponding letter(s) as per the styles shown below.

SINGLE REDUCTION STYLES



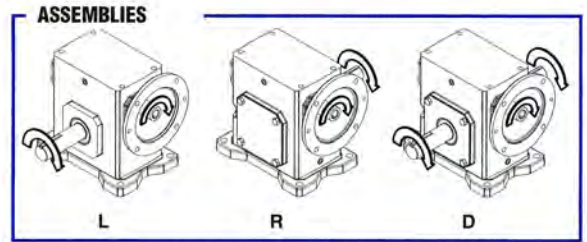
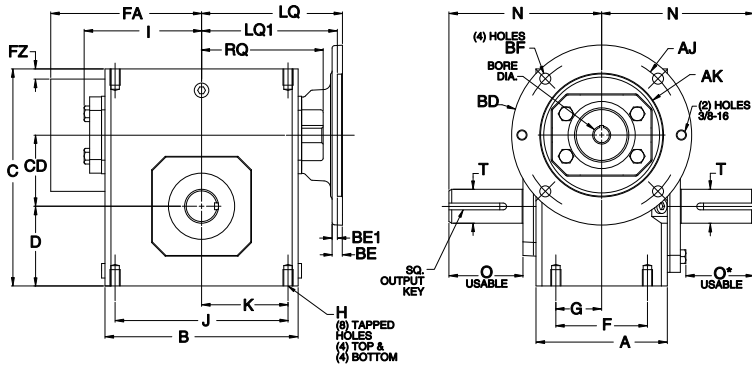
SINGLE REDUCTION RATINGS ALL STYLES (1800 RPM INPUT)

		813 Series			815 Series			818 Series			821 Series		
Ratio :1	Output RPM	Input HP	Output HP	Output Torque (lb-in)	Input HP	Output HP	Output Torque (lb-in)	Input HP	Output HP	Output Torque (lb-in)	Input HP	Output HP	Output Torque (lb-in)
5	350	1.06	0.96	172	1.62	1.46	263	1.70	1.56	281	2.51	2.32	418
7.5	233	0.78	0.64	173	1.24	1.09	294	1.67	1.50	404	2.48	2.24	605
10	175	0.72	0.61	219	1.02	0.87	313	1.38	1.21	436	2.10	1.86	671
15	117	0.56	0.45	242	0.77	0.62	334	1.05	0.87	470	1.58	1.34	725
20	88	0.44	0.33	240	0.64	0.48	349	0.82	0.67	480	1.25	1.03	742
25	70	0.36	0.27	243	0.54	0.40	353	0.67	0.53	477	1.01	0.82	735
30	58	0.32	0.22	242	0.47	0.32	343	0.61	0.45	485	0.90	0.69	749
40	44	0.25	0.17	239	0.39	0.24	347	0.48	0.33	480	0.72	0.52	742
50	35	0.23	0.13	233	0.33	0.19	339	0.40	0.26	463	0.57	0.40	720
60	29	0.18	0.10	220	0.28	0.15	323	0.32	0.20	434	0.49	0.31	674
80	22	0.12	0.06	181	0.20	0.09	269	0.21	0.12	353	0.33	0.19	552
100	18	0.08	0.04	142	0.15	0.06	213	0.14	0.08	277	0.22	0.12	433
		824 Series			826 Series			830 Series			832 Series		
Ratio :1	Output RPM	Input HP	Output HP	Output Torque (lb-in)	Input HP	Output HP	Output Torque (lb-in)	Input HP	Output HP	Output Torque (lb-in)	Input HP	Output HP	Output Torque (lb-in)
5	350	3.89	3.63	653	4.80	4.50	810	6.68	6.29	1131	9.14	8.61	1602
7.5	233	3.47	3.20	863	4.27	3.95	1068	6.05	5.62	1519	7.84	7.32	1976
10	175	3.13	2.75	992	3.99	3.65	1315	5.91	5.32	1915	7.03	6.51	2343
15	117	2.33	1.99	1076	3.04	2.64	1427	4.41	3.86	2085	5.28	4.72	2551
20	88	1.85	1.53	1101	2.42	2.03	1463	3.49	2.97	2141	4.19	3.66	2633
25	70	1.56	1.21	1087	2.03	1.61	1445	3.03	2.40	2160	3.47	2.95	2658
30	58	1.33	1.03	1113	1.78	1.37	1479	2.48	2.01	2167	3.09	2.39	2578
40	44	1.05	0.76	1101	1.39	1.02	1464	2.05	1.49	2146	2.35	1.83	2641
50	35	0.86	0.59	1065	1.12	0.79	1416	1.59	1.16	2085	1.91	1.43	2568
60	29	0.72	0.47	1007	0.96	0.62	1343	1.32	0.92	1980	1.57	1.13	2437
80	22	0.46	0.29	830	0.60	0.38	1095	0.90	0.59	1684	1.05	0.68	1962
100	18	0.30	0.18	648	0.40	0.24	856	0.60	0.37	1321	0.71	0.43	1546
		842 Series			852 Series			860 Series					
Ratio :1	Output RPM	Input HP	Output HP	Output Torque (lb-in)	Input HP	Output HP	Output Torque (lb-in)	Input HP	Output HP	Output Torque (lb-in)			
5	350	15.55	14.75	2742	28.17	26.85	4953	35.04	33.49	6028			
7.5	233	14.06	13.24	3574	24.01	22.69	6125	29.39	27.85	7520			
10	175	12.90	12.04	4332	19.40	18.08	6508	23.99	22.44	8080			
15	117	9.30	8.43	4553	14.34	13.98	7012	17.62	16.05	8664			
20	88	7.59	6.72	4840	11.32	9.96	7174	13.96	12.38	8912			
25	70	6.24	5.41	4872	9.38	8.02	7221	11.54	9.97	8971			
30	58	5.23	4.37	4720	8.04	6.70	7235	9.84	8.28	8941			
40	44	4.20	3.37	4847	6.29	4.97	7159	7.71	6.18	8894			
50	35	3.39	2.61	4704	5.14	3.86	6950	6.28	4.80	8635			
60	29	2.70	2.00	4322	4.27	3.06	6598	5.18	3.78	8155			
80	22	1.79	1.26	3620	2.91	1.90	5478	3.70	2.52	7264			
100	18	1.20	0.79	2852	2.07	1.29	4646	2.57	1.64	5886			



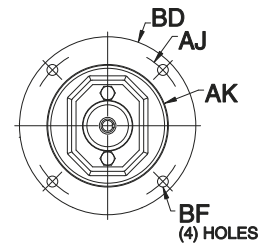
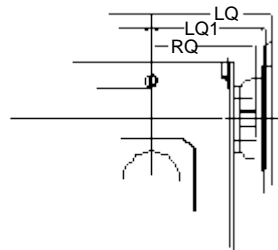
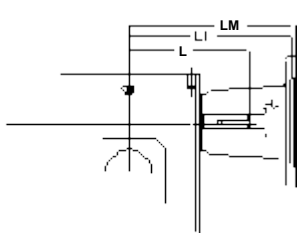
SYTLE BMQ & MOTOR MOUNT DIMENSIONS

STYLE BMQ DIMENSIONS (Inches)



REVERSE ALL ARROWS FOR OPPOSITE INPUT SHAFT ROTATION. CONTACT FACTORY FOR OTHER MOUNTINGS OR ASSEMBLY POSITIONS.

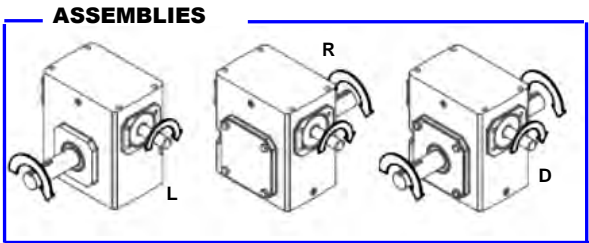
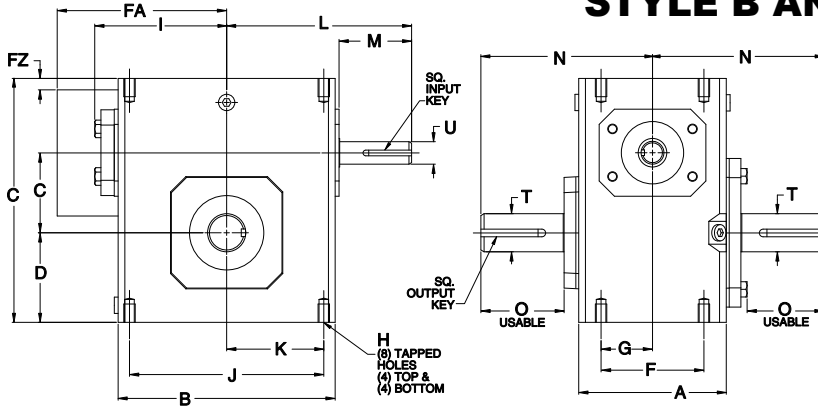
SERIES	A	B	C	D	CD	F	G	H		I	J	K	N	O	O*	T +0.0 - .0015	Output Key
								Tap Size	Depth								
813	2.82	3.80	4.66	1.72	1.38	2.00	1.00	5/16-18	0.50	2.61	3.25	1.63	4.00	2.16	1.94	0.625	.188 X 1.38
815	3.44	4.88	5.38	1.91	1.54	2.75	1.38	5/16-18	0.63	3.14	4.19	2.09	4.31	2.11	1.90	0.750	.188 X 1.38
818	3.56	5.06	5.75	2.06	1.75	2.75	1.38	5/16-18	0.63	3.24	4.19	2.09	4.31	2.05	1.84	0.875	.188 X 1.38
821	3.81	5.80	6.38	2.28	2.06	2.88	1.44	3/8-16	0.63	3.61	5.00	2.50	4.68	2.29	2.08	1.000	.25 X 1.44
824	4.06	6.12	6.94	2.50	2.38	2.88	1.44	3/8-16	0.69	3.77	5.00	2.50	5.14	2.66	2.44	1.125	.25 X 1.44
826	4.84	7.12	8.00	2.94	2.63	3.38	1.69	3/8-16	0.69	4.34	6.38	3.19	5.63	2.73	2.52	1.125	.25 X 1.44
830	5.25	8.12	8.88	3.25	3.00	4.00	2.00	7/16-14	0.88	4.84	7.00	3.50	6.75	3.60	3.36	1.250	.25 X 1.56
832	5.75	8.50	9.38	3.50	3.25	4.00	2.00	7/16-14	0.88	5.02	7.50	3.75	7.06	3.66	3.42	1.375	.375 X 2.50
842	6.13	10.25	11.38	4.44	4.25	5.00	2.50	5/8-11	1.00	6.10	8.50	4.25	8.1.2	4.50	4.21	1.75	.50 X 2.50
852	7.19	13.00	14.00	5.12	5.25	5.81	2.91	5/8-11	1.25	7.50	11.00	5.50	9.06	4.78	4.53	2.000	.50 X 2.50
860**	8.13	14.25	16.50	6.50	6.00	6.38	3.19	5/8-11	1.00	N/A	12.75	6.38	10.00	4.65	4.65	2.500	.625 X 4.00



MOTOR MOUNTING DIMENSIONS

SERIES	BMC STYLE				BMQ STYLE								FRAME	AJ	AK	BD	BE	BE1	BORE DIA.	Key	BF
	LM		L		LQ		LQ1		RQ												
	48CZ	56C/140T	180TC/210TC	250TC	48CZ/56C/140TC	180TC	210TC	250TC	56C/140TC	180TC	210TC	250TC									
813	5.63	6.07	N/A	N/A	3.46	N/A	N/A	N/A	3.09	N/A	N/A	N/A	48CZ	3.75	3.00	4.36	.38	N/A	0.500	.125	0.28
815	6.16	6.60	N/A	N/A	3.99	N/A	N/A	N/A	3.62	N/A	N/A	N/A	56C	5.88	4.50	6.50	.38	N/A	0.625	.188	0.41
818	6.26	6.70	N/A	N/A	4.09	N/A	N/A	N/A	3.59	N/A	N/A	N/A	140TC	5.88	4.50	6.50	.38	N/A	0.875	.188	0.41
821	6.63	7.07	N/A	N/A	4.46	N/A	N/A	N/A	4.06	N/A	N/A	N/A	180TC	7.25	8.50	8.50	N/A	0.50	1.125	.25	0.53
824	N/A	7.76	8.76	N/A	4.63	5.06	N/A	N/A	4.09	4.56	N/A	N/A	210TC	7.25	8.50	8.50	N/A	0.50	1.375	.313	0.53
826	N/A	8.32	9.32	N/A	5.19	5.62	N/A	N/A	4.82	5.13	N/A	N/A	250TC	7.25	8.50	8.50	N/A	0.50	1.625	.375	0.53
830	N/A	8.82	9.82	N/A	5.69	6.12	6.56	N/A	5.32	5.63	6.06	N/A									
832	N/A	9.01	10.01	N/A	5.88	6.31	6.75	N/A	5.51	5.81	6.25	N/A									
842	N/A	11.81	12.90	13.46	6.45	7.21	7.21	7.77	6.04	6.68	6.68	7.24									
852	N/A	13.21	14.30	14.86	7.85	8.61	8.61	9.17	7.35	7.98	7.98	8.54									
860	N/A	N/A	15.88	16.50	10.45	9.33	9.33	9.94	10.01	8.69	8.69	8.69									

STYLE B AND BASE MOUNT DIMENSIONS

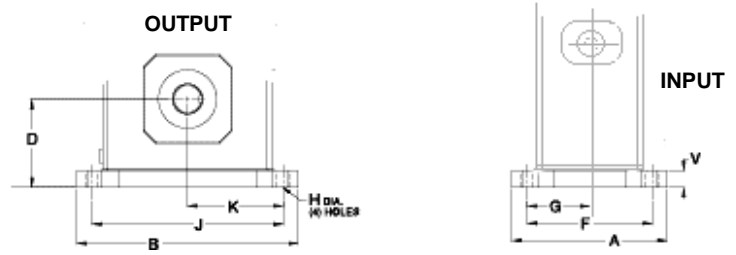


REVERSE ALL ARROWS FOR OPPOSITE INPUT SHAFT ROTATION. CONTACT FACTORY FOR OTHER MOUNTINGS OR ASSEMBLY POSITIONS.

STYLE B DIMENSIONS (Inches)

SERIES	A	B	C	D	CD	F	G	H Tap Size Depth	I	J	K	L	N	O	O* dbl.	T + 0 -.0015	U + 0 -.0015	Input Key	Output Key	
813	2.82	3.80	4.66	1.72	1.33	2.00	1.00	5/16-18	0.50	2.61	3.25	1.63	3.82	4.00	2.16	1.94	0.625	0.500	.125 X 1.00	.188 X 1.38
815	3.44	4.88	5.38	1.91	1.54	2.75	1.38	5/16-18	0.63	3.14	4.19	2.09	4.35	4.31	2.11	1.90	0.750	0.625	.188 X 1.38	.188 X 1.38
818	3.56	5.06	5.75	2.06	1.75	2.75	1.38	5/16-18	0.63	3.24	4.19	2.09	4.45	4.31	2.05	1.84	0.875	0.625	.188 X 1.38	.188 X 1.38
821	3.81	5.80	6.38	2.28	2.06	2.88	1.44	3/8-16	0.63	3.61	5.00	2.50	4.82	4.68	2.29	2.08	1.000	0.625	.188 X 1.38	.25 X 1.44
824	4.06	6.12	6.94	2.50	2.38	2.88	1.44	3/8-16	0.69	3.77	5.00	2.50	5.51	5.14	2.66	2.44	1.125	0.750	.188 X 1.63	.25 X 1.44
826	4.84	7.12	8.00	2.94	2.63	3.38	1.69	3/8-16	0.69	4.34	6.38	3.19	6.07	5.63	2.73	2.52	1.125	0.750	.188 X 1.63	.25 X 1.44
830	5.25	8.12	8.88	3.25	3.00	4.00	2.00	7/16-14	0.88	4.84	7.00	3.50	6.57	6.75	3.60	3.36	1.250	0.875	.188 X 1.63	.25 X 1.56
832	5.75	8.50	9.38	3.50	3.25	4.00	2.00	7/16-14	0.88	5.02	7.50	3.75	6.76	7.06	3.66	3.42	1.375	0.875	.188 X 1.63	.375 X 2.50
842	6.13	10.25	11.38	4.44	4.25	5.00	2.50	5/8-11	1.00	6.10	8.50	4.25	9.57	8.12	4.50	4.21	1.875	1.250	.25 X 2.50	.25 X 2.50
852	7.19	13.00	14.00	5.12	5.25	5.81	2.91	5/8-11	1.25	7.50	11.00	5.50	10.88	9.06	4.78	4.53	2.00	1.250	.25 X 3.00	.50 X 2.50
860	8.13	14.25	16.50	6.50	6.00	6.38	3.19	5/8-11	1.00	N/A	12.50	6.38	11.78	10.00	4.65	4.65	2.50	1.50	.375 X 3.00	.625 X 4.00

BASE MOUNTING DIMENSIONS - Horizontal "U" Base For UMQ, UMC and U Style

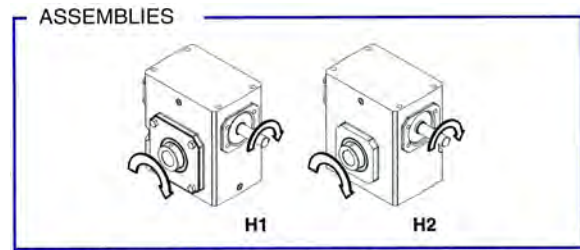
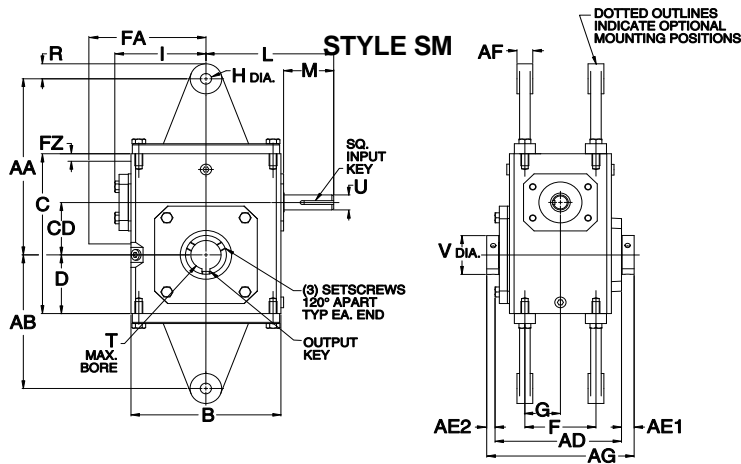


Horizontal "U" Base For UMQ, UMC and U Style

SERIES	A	B	D (U Style)	D (S style)	F	G	H	J	K	V
813	4.24	5.37	2.25	3.47	3.31	1.66	0.34	4.37	2.19	0.53
815	5.56	6.50	2.50	4.06	4.31	2.16	4.31	5.25	2.63	0.59
818	5.75	6.99	2.75	4.38	4.50	2.25	0.41	5.75	2.88	0.69
821	6.00	7.69	3.00	4.81	4.69	2.34	0.47	6.38	3.19	0.72
824	6.19	8.37	3.25	5.19	4.88	2.44	0.49	7.06	3.53	0.75
826	6.50	9.25	3.69	5.82	5.25	2.63	0.53	8.00	4.00	0.75
830	7.50	10.00	4.00	6.38	5.88	2.94	0.53	8.44	4.22	0.75
832	7.75	11.12	4.38	6.75	6.13	3.06	0.53	9.50	4.75	0.88
842	9.75	13.24	5.44	7.94	7.63	3.81	0.66	11.12	5.56	1.00
852	10.50	16.24	6.25	10.01	8.38	4.19	0.78	14.12	7.06	1.13
860	12.00	18.99	7.75	11.25	9.5	4.75	0.91	16.49	8.25	1.25

NOTE: Pricing and specifications subject to change without notice.

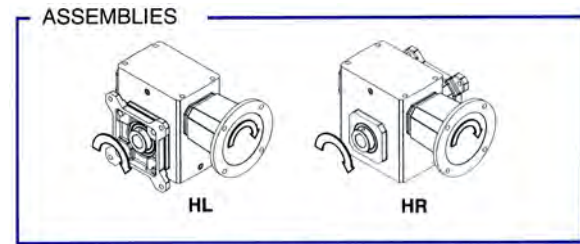
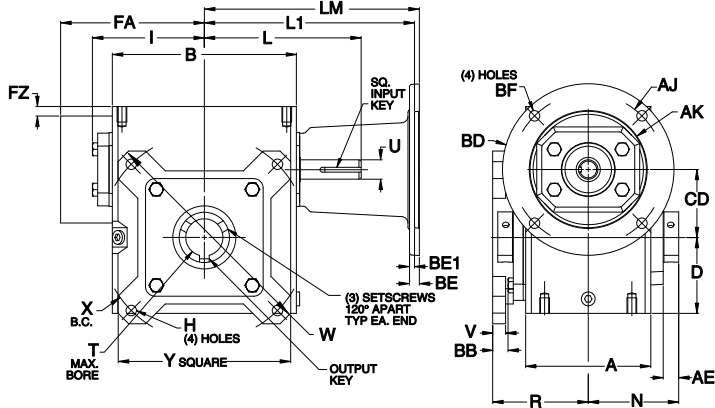
OHIO GEAR STYLE SM & SMFMC DIMENSIONS



REVERSE ALL ARROWS FOR OPPOSITE INPUT SHAFT ROTATION. CONTACT FACTORY FOR OTHER MOUNTINGS OR ASSEMBLY POSITIONS.

SERIES	AA	AB	AD	AE1	AE2	AF	AG	B	C	D	CD	F	G	H	I	L	M	R	T MAX	U	V	Input Key	Output Key
813	4.19	2.97	3.90	0.53	0.32	0.25	4.75	3.80	4.66	1.72	1.33	2.00	1.00	0.53	2.61	3.82	1.76	0.50	0.625	0.50	1.00	.125 X 1.00	.188 X 1.50
815	5.97	4.41	4.61	0.51	0.30	0.75	5.42	5.19	5.38	1.91	1.54	2.75	1.38	0.53	3.14	4.35	1.76	0.75	0.625	0.625	1.00	.188 X 1.38	.188 X 1.50
818	6.19	4.56	4.73	0.49	0.28	0.75	5.50	5.19	5.75	2.06	1.75	2.75	1.38	0.53	3.24	4.45	1.76	0.75	1.00	0.625	1.44	.188 X 1.38	.25 X 3.00
821	7.24	5.43	4.99	0.61	0.40	0.75	6.00	5.80	6.38	2.28	2.06	2.88	1.44	0.53	3.61	4.82	1.76	0.75	1.438	0.625	1.94	.188 X 1.38	.375 X 3.00
824	7.69	5.75	5.18	0.51	0.31	0.75	6.00	6.12	6.94	2.50	2.38	2.88	1.44	0.69	3.77	5.51	2.38	0.75	1.438	0.75	1.94	.188 X 1.63	.375 X 3.00
826	8.81	6.69	6.01	0.60	0.39	0.75	7.00	7.38	8.00	2.94	2.63	3.38	1.69	0.53	4.34	6.07	2.38	0.75	1.438	0.75	1.94	.188 X 1.63	.375 X 3.00
830	10.63	8.25	6.53	0.60	0.36	0.75	7.50	8.12	8.88	3.25	3.00	4.00	2.00	0.53	4.84	6.57	2.38	0.88	1.938	0.875	2.51	.188 X 1.63	.50 X 3.00
832	10.88	8.50	7.04	0.54	0.29	0.75	7.88	8.75	9.38	3.50	3.25	4.00	2.00	0.53	5.02	6.76	2.38	0.88	1.938	0.875	2.51	.188 X 1.63	.50 X 3.00
842	11.94	9.44	7.53	0.63	0.34	0.75	8.50	10.25	11.38	4.44	4.25	5.00	2.50	0.53	6.10	9.57	3.47	0.75	2.188	1.25	2.75	.25 X 2.50	.50 X 3.00
852	13.88	10.12	8.85	0.97	0.68	1.00	10.50	13.00	14.00	5.12	5.25	5.81	2.91	0.66	7.50	10.88	3.38	1.00	3.438	1.25	4.26	.25 X 3.00	.875 X 3.44
860	15.00	11.50	10.52	0.52	0.52	0.38	11.50	14.50	16.50	6.50	6.00	6.38	3.19	0.66	N/A	11.78	3.41	0.69	3.438	1.50	4.18	.375 X 3.00	.875 X 3.44

STYLE SMFMC



REVERSE ALL ARROWS FOR OPPOSITE INPUT SHAFT ROTATION. CONTACT FACTORY FOR OTHER MOUNTINGS OR ASSEMBLY POSITIONS.

Note: For Dimensions L, L1 & LM refer to page 66

SERIES	A	AE	B	BB	D	CD	H	I	N	R	T MAX -0.000 +0.0025	U +0.000 -0.015	V	W	X	Y	Input Key	Output Key
813	2.82	0.53	3.80	0.08	1.72	1.33	0.34	2.61	2.38	2.52	0.625	0.500	0.38	5.92	5.00	4.50	.125 X 1.00	.188 X 1.50
815	3.44	0.51	4.88	1.22	1.91	1.54	0.34	3.14	2.71	2.84	0.625	0.625	0.38	5.88	5.00	4.50	.188 X 1.38	.188 X 1.50
818	3.56	0.49	5.06	0.11	2.06	1.75	0.34	3.24	2.75	3.18	1.00	0.625	0.38	6.64	5.88	5.00	.188 X 1.38	.25 X 3.00
821	3.81	0.61	5.80	0.55	2.28	2.06	0.41	3.61	3.00	3.69	1.438	0.625	0.44	7.88	7.00	5.99	.188 X 1.38	.375 X 3.00
824	4.06	0.51	6.12	0.51	2.50	2.38	0.41	3.77	3.00	3.73	1.438	0.75	0.44	8.39	7.50	6.27	.188 X 1.63	.375 X 3.00
826	4.84	0.60	7.12	0.04	2.94	2.63	0.41	4.34	3.50	3.70	1.438	0.75	0.50	8.88	8.00	6.67	.188 X 1.63	.375 X 3.00
830	5.25	0.60	8.12	0.07	3.25	3.00	0.41	4.84	3.75	3.78	1.938	0.875	0.50	9.89	9.00	7.37	.188 X 1.63	.50 X 3.00
832	5.75	0.54	8.50	0.07	3.50	3.25	0.41	5.02	3.94	4.03	1.938	0.875	0.50	9.89	9.00	7.37	.188 X 1.63	.50 X 3.00
842	6.13	0.63	10.25	0.06	4.44	4.25	0.56	6.10	4.25	4.56	2.188	1.25	0.62	12.95	11.50	9.65	.25 X 2.50	.50 X 3.00
852	7.19	0.97	13.00	0.34	5.12	5.25	0.69	7.50	5.25	5.62	3.438	1.25	0.75	15.50	14.00	11.75	.25 X 3.00	.875 X 3.44
860	8.13	0.52	14.25	1.38	6.50	6.00	0.69	N/A	5.75	7.26	3.438	1.50	0.75	18.00	15.63	14.00	.375 X 3.00	.875 X 3.44

NOTE: Pricing and specifications subject to change without notice.

OHIO GEAR

OHIO GEAR SINGLE REDUCTION - LIST PRICING



SIZE/STYLE	B	U (S)	BMQ/MC	UMQ	J	JMQ
813	\$459	\$489	\$525	\$555	\$554	\$620
815	\$492	\$533	\$569	\$610	\$593	\$670
818	\$498	\$539	\$575	\$616	\$599	\$676
821	\$587	\$633	\$664	\$710	\$699	\$776
824	\$733	\$782	\$840	\$889	\$850	\$957
826	\$840	\$890	\$969	\$1,019	\$965	\$1,094
830	\$1,108	\$1,172	\$1,240	\$1,304	\$1,244	\$1,376
832	\$1,231	\$1,299	\$1,366	\$1,434	\$1,380	\$1,515
842	\$1,903	\$2,033	\$2,193	\$2,323	\$2,142	\$2,432
852	\$3,182	\$3,411	\$3,696	\$3,925	\$3,582	\$4,096
860	\$5,119	\$5,523	\$5,560	\$5,964	---	---



SIZE/STYLE	PH/PL	PH/PL MCQ	SM	SMF	SMMQ/MC	SMFMQ/MC
813	\$558	\$624	\$606	\$691	\$672	\$757
815	\$595	\$672	\$639	\$724	\$715	\$800
818	\$601	\$678	\$644	\$729	\$721	\$806
821	\$699	\$776	\$779	\$879	\$857	\$956
824	\$860	\$969	\$943	\$1,063	\$1,050	\$1,170
826	\$1,013	\$1,142	\$1,058	\$1,198	\$1,188	\$1,328
830	\$1,290	\$1,422	\$1,319	\$1,469	\$1,451	\$1,601
832	\$1,394	\$1,559	\$1,762	\$1,917	\$1,673	\$1,827
842	\$2,134	\$2,424	\$2,428	\$2,638	\$2,718	\$2,928
852	\$3,571	\$4,085	\$3,671	\$3,971	\$4,109	\$4,409
860	\$5,857	\$6,298	\$6,113	\$6,773	\$6,665	\$7,324

ADDER FOR DOUBLE OUTPUT SHAFT (DOUBLE OR SINGLE REDUCTION)

SIZE	813	815	818	821	824	826	830	832	842	852	860
PRICE	\$21	\$21	\$26	\$30	\$33	\$36	\$44	\$48	\$74	\$91	\$127

NOTE: DOUBLE REDUCTION OHIO REDUCERS are also available. Contact *PHELAN ELECTROMECC* for details.

OHIO GEAR

NOTE: Pricing and specifications subject to change without notice.



SIZE	HORIZ "U" BASE	VERTICAL PH/PL BASE	"J" BASE	STEEL "BF" OUTPUT FLANGE KIT	TORQUE ARM KIT	BMC STYLE INPUT FLANGE KIT
813	\$30	\$99	\$95	\$108	\$228	\$66
815	\$41	\$103	\$101	-	\$228	
818	\$41	\$103	\$101	\$108	\$228	\$77
821	\$46	\$112	\$112	\$119	\$228	
824	\$49	\$127	\$117	\$171	\$228	\$130
826	\$50	\$173	\$125	\$184	\$228	
830	\$64	\$182	\$136	-	\$228	\$156
832	\$68	\$193	\$149	-	\$228	
842	\$130	\$231	\$239	-	\$228	\$270
852	\$229	\$389	\$400	-	\$481	\$430
860	\$404	\$738	-	-	\$481	\$600

SINGLE REDUCTION - APPROXIMATE WEIGHTS (LBS.)

REDUCER STYLE	813	815	818	821	824	826	830	832	842	852	860
Solid Output Shaft											
BMQ	17	22	24	30	46	59	80	83	146	247	344
BMC	21	27	29	34	47	60	91	94	154	254	361
B	14	20	22	27	38	51	76	79	136	232	321
Hollow Output Shaft											
SMMQ	17	22	25	33	47	57	80	83	146	247	344
SMC	21	27	30	37	52	62	91	94	154	254	361
SM	14	20	23	28	44	54	76	79	136	222	321

REDUCER ACCESSORIES • APPROXIMATE WEIGHTS (LBS.)

ACCESSORY	813	815	818	821	824	826	830	832	842	852	860
T/U	3	3	3	3	8	10	16	16	18	22	31
J	1	2	2	3	3	4	6	6	11	18	--
PL/PH	4	4	4	8	8	11	14	14	28	36	36
F (Cast Iron)	1	2	3	4	5	5	16	16	12	28	12
BF (Steel)	2	--	4	4	7	9	-	-	-	-	--

SM STYLE (SHAFT MOUNT) AVAILABLE BORE SIZES (INCHES)

813/815	818	821/824/826	830/832	842	852 860
.625"	.625" .688" .75" .875", 1.00"	1.00", 1.125" 1.188" 1.25" 1.438"	1.188", 1.25" 1.438", 1.50" 1.625", 1.688" 1.75", 1.938"	1.438" 1.50", 1.625" 1.688", 1.75" 1.875", 1.938" 2.00", 2.188"	2.00", 2.188", 2.25", 2.438", 2.50", 2.688" 2.938", 3.00" 3.188", 3.438"

PLEASE NOTE: DOUBLE REDUCTION OHIO REDUCERS are also available. Contact *PHELAN ELECTROMECC* for details.

OHIO GEAR

NOTE: Pricing and specifications subject to change without notice.